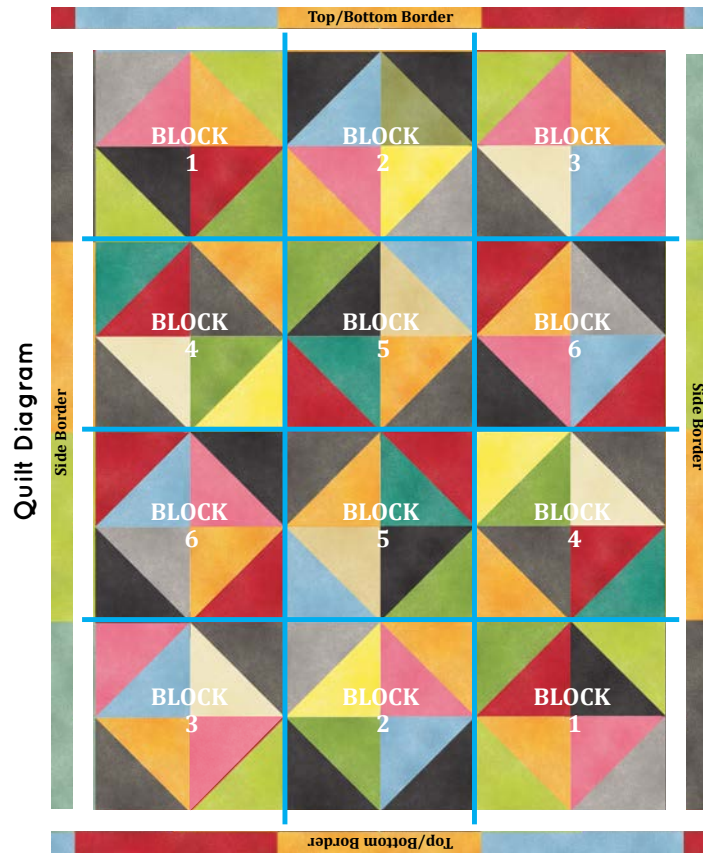


## QUILT ASSEMBLY:

4. Using the completed BLOCKS, sew together blocks as shown below to create QUILT CENTER. (Note the Rotation of the blocks.)

5. Sew **Side Border** to left and to right of quilt center. Then sew **Top/Bottom Border** to top and to bottom of quilt center. (Note the Rotation of borders.)



## FINISHING

Cut batting and backing 3" larger than top on all sides. Layer backing, batting and top together and baste or pin. When quilting is completed, trim excess batting and backing. Bind as usual.

Finished Size: 52" x 68"

*Note: If this Benartex pattern is included in a kit, any questions about the kit should be addressed to the vendor from whom you bought it.*

Share your finished quilt with the Benartex community on social media by tagging

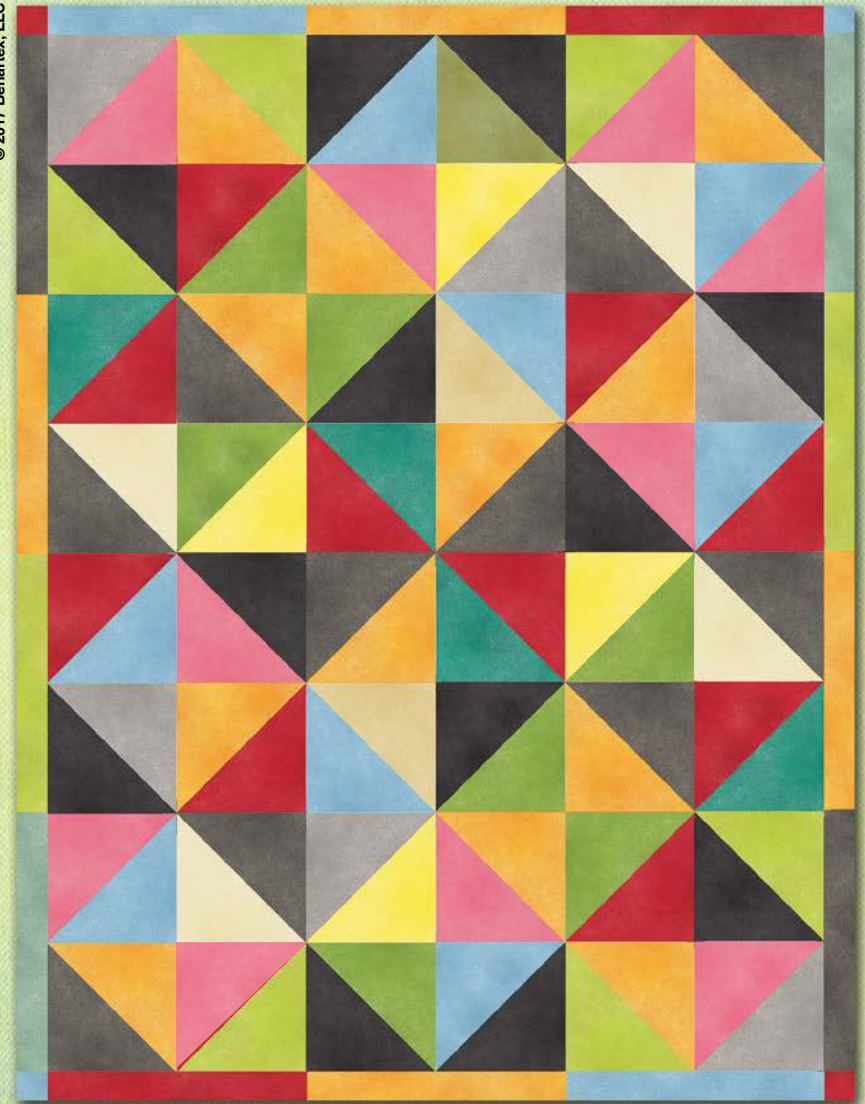
**#benartex\_fabrics!**



# Blush Palette

Designed by Benartex Studios

© 2017 Benartex, LLC



These blush colors seem to glow! This simple, yet dynamic, wallhanging would be an ideal project to show off your quilting skills!

SHADOW  
**BLUSH**  
For Quilters

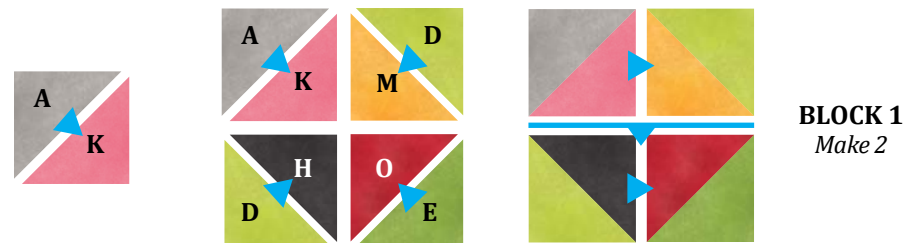
Uses Benartex's  
Shadow Blush collection  
by Benartex Studios  
Finished Size: 52" x 68"

Benartex  
Fabrics for quilters. By quilters.

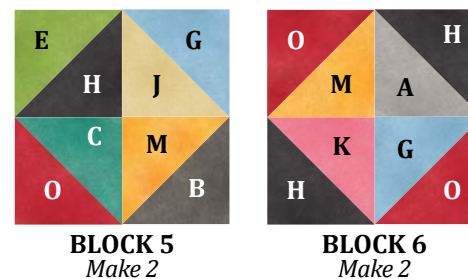
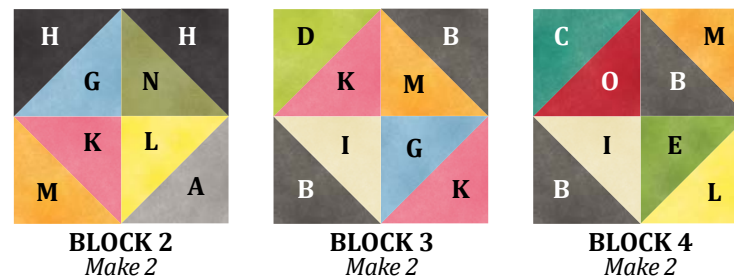
| SAMPLE | KEY/SKU                      | QTY    | CUT  |
|--------|------------------------------|--------|--|
| A      | Blush<br>2045-D Fog          | 3/4 yd | (3) 8-7/8" squares cut in half diagonally to yield (6) HST's.<br>(7) 2 1/4" x WOF strips, <i>Binding</i>             |
| B      | Blush<br>2045-F Iron         | 5/8 yd | (5) 8-7/8" squares cut in half diagonally to yield (10) HST's<br>(2) 2 1/2" x 16 1/2" strips                         |
| C      | Blush<br>2045-FF Lagoon      | 1/3 yd | (2) 8-7/8" squares; cut in half diagonally to yield (4) HST's  |
| D      | Blush<br>2045-H Lime         | 1/2 yd | (3) 8-7/8" squares, cut in half diagonally to yield (6) HST's<br>(2) 2 1/2" x 16 1/2" strips                         |
| E      | Blush<br>2045-J Grass Green  | 1/3 yd | (3) 8-7/8" squares, cut in half diagonally to yield (6) HST's  |
| F      | Blush<br>2045-N Sea Mist     | 1/8 yd | (2) 2 1/2" x 16 1/2" strips  |
| G      | Blush<br>2045-T Sky Blue     | 1/3 yd | (4) 8-7/8" squares, cut in half diagonally to yield (8) HST's<br>(2) 2 1/2" squares<br>(2) 2 1/2" x 16 1/2" strips   |
| H      | Blush<br>2045-11 Black       | 5/8 yd | (6) 8-7/8" squares, cut in half diagonally to yield (12) HST's   |
| I      | Blush<br>2045-19 Sand        | 1/3 yd | (2) 8-7/8" squares; cut in half diagonally to yield (4) HST's  |
| J      | Blush<br>2045-23 Chino       | 1/3 yd | (1) 8-7/8" square, cut in half diagonally to yield (2) HST's   |
| K      | Blush<br>2045-24 Carnation   | 5/8 yd | (5) 8-7/8" squares, cut in half diagonally to yield (10) HST's   |
| L      | Blush<br>2045-28 Lemon       | 1/3 yd | (2) 8-7/8" squares, cut in half diagonally to yield (4) HST's  |
| M      | Blush<br>2045-37 Mango       | 2/3 yd | (6) 8-7/8" squares, cut in half diagonally to yield (12) HST's<br>(4) 2 1/2" x 16 1/2" strips                        |
| N      | Blush<br>2045-42 Dk. Sage    | 1/3 yd | (1) 8-7/8" square, cut in half diagonally to yield (2) HST's.  |
| O      | Blush<br>2045-81 Cadmium Red | 5/8 yd | (5) 8-7/8" squares, cut in half diagonally to yield (10) HST's.<br>(2) 2 1/2" squares<br>(2) 2 1/2" x 16 1/2" strips |

### BLOCK ASSEMBLY:

1. USew (1) A HST to (1) K HST. Square block to 8 1/2". Using M,D,H,O, and E HST (Half Square Triangles), make **BLOCK 1** as shown in the diagram below. Square to 16 1/2".



2. Using the remaining HST's, create **BLOCKS 2-6** following the **BLOCK** diagrams below.



### BORDER ASSEMBLY:

3. Using the 2 1/2" x 16 1/2" strips and 2 1/2" squares, create **TOP/BOTTOM BORDER** and **SIDE BORDERS** following the diagrams below. *Make 2 of each Border.*

