

## YARDAGE

**Fabric 1:** 1 panel on black (white)

**Fabric 2:** ¼ yard Paisley Style on black (white)

**Fabric 3:** ¼ yard Purple Triangular Motion

**Fabric 4:** ¼ yard Light Blue Beaded Swirls Tonal (light teal)

**Fabric 5:** ¼ yard Small Black Geo squares

**Fabric 6:** 1 ½ yards Blue Feather Frolic (teal)

**Fabric 7:** 3 ½ yards backing

## ASSEMBLY

*Refer to the Quilt Photo for color selection in steps 1-5.*

1. Fussy cut the Fabric 1 panel to measure approximately 24" x 40".
2. Cut 2 Fabric 2 strips 3 ¾" wide by width of fabric. Sew a strip to each long side of the panel. Press seams away from the center and trim excess at each end.
3. Cut 4 Fabric 3 strips 1 ½" wide by width of fabric. Sew a strip to each long side of the quilt top. Press seams away from the center and trim excess at each end. Sew the remaining strips to the top and bottom. Press and trim as before.
4. From Fabric 4: Cut 12, 2" squares and 4, 2" x 6" pieces. From Fabric 5: Cut 4, 2" x width of fabric strips; subcut 1 strip into 14, 2" squares, subcut 1 strip into 2, 2" x 18" strips and trim 2 strips to measure 2" x 28".

Sew the Fabric 4 and Fabric 5 squares alternately together to make 4 segments of 6 squares each. Sew a 2" x 6" Fabric 4 piece to the Fabric 5 end of one segment, and a 2" x 28" Fabric 5 strip to the other end to make one border strip. Make 2 strips. Noting placement, align the Fabric 4 end of one strip to the upper left corner and sew to the long side of the quilt top. Press the seam away from the center and trim excess from the Fabric 5 end. Repeat on the other long side of the quilt top noting reverse placement of the border strip.

In the same manner, make 2 more border strips by sewing each of the 2 remaining segments between a 2" x 6" Fabric 4 piece and a 2" x 18" Fabric 5 piece. Sew a 2" Fabric 5 square to the Fabric 4 end of each strip. Noting placement, align the Fabric 5 square end to each designated corner, then sew these strips to the top and bottom of the quilt top. Press and trim as before.

**5.** From Fabric 6, cut 5, 5 ½" x width of fabric strips. Sew the short ends together to make one long strip. Measure your quilt top vertically through the center and cut 2 strips to this length. Sew these strips to the long sides of the quilt top, easing in if necessary. Trim any excess at each end. Measure your quilt top horizontally through the center, including both outer borders and cut 2 strips to that length. Sew these strips to the top and bottom.

**6.** From Fabric 6, cut 6, 2 ½" x width of fabric strips. Sew the strips short ends together to make one long strip and bind.

**Benartex**  
Fabric for quilters. By quilters.

© 2020 BENARTEX, LLC

BENARTEX, LLC • 132 WEST 36TH ST, 4TH FLOOR  
NEW YORK, NY 10018 • 212-840-3250 • BENARTEX.COM



Follow us Online

free pattern

# MEOW MIX



• BY ANN LAUER

• FINISHED SIZE: 45" X 55"

**CAT-I-TUDE**  
*Singing the Blues*  
ENHANCE WITH...  
by Ann Lauer of Grizzly Gulch Gallery





# CAT-I-TUDE

*Singing the Blues*

ENHANCED WITH PEARLESCENT  
by Ann Lauer of Grizzly Gulch Gallery



*free pattern*

MEOW MIX  
BY ANN LAUER (45" X 55")

Those cats of Ann's are the most popular cats on the planet! Guess what they are doing now—Singing the Blues! Blue and white combinations are always popular, and this one is just pure fun including blues, teals and purples with lime accents and pearlescent highlights. You'll find the cats climbing over hearts or sitting in boxes (the panel print). Ann's signature paisley is back in these cool colors along with feathers, triangles and other wonderful tonals designed to work in many projects. Don't be left out! Order "Cat-i-tude Singing the Blues" today.

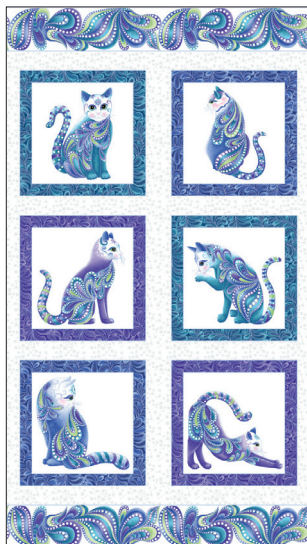
SEPTEMBER/OCTOBER 2020 DELIVERY  
25 SKUS • 100% COTTON  
PRINTS SHOWN AT 20% OF ACTUAL SIZE  
FULL COLLECTION (15 YD): CATSB15 • (10 YD): CATSB10  
FOR MORE PROJECTS AND PATTERNS, VISIT:  
GRIZZLYGULCHGALLERY.COM

PRE CUTS AVAILABLE

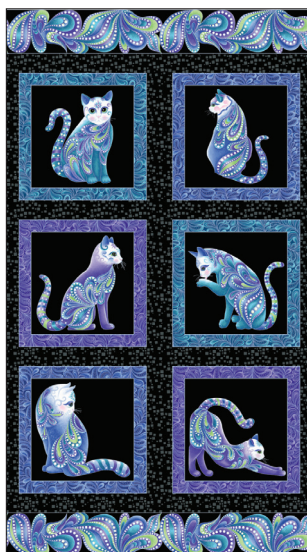


10X10'S STRIP-PIES FQ BOX  
CAT10PK STCATPK FQCATBX

Benartex



10260P-09  
CAT-I-TUDE PANEL  
WHITE/MULTI



10260P-12  
CAT-I-TUDE PANEL  
BLACK/MULTI

P=ENHANCED WITH PEARLESCENT



10262P-09 • ARTIST-O-CATS • WHITE/MULTI



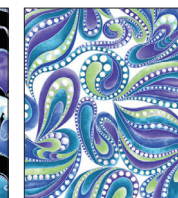
10262P-12 • ARTIST-O-CATS • BLACK/MULTI



10263P-09 • HEARTS AND CATS • WHITE/MULTI



10263P-12 • HEARTS AND CATS • BLACK/MULTI



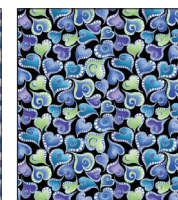
10264P-09 • PAISLEY STYLE • WHITE/MULTI



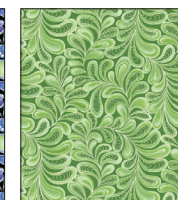
10264P-12 • PAISLEY STYLE • BLACK/MULTI



10265P-09 • SWIRLING HEARTS • WHITE/MULTI



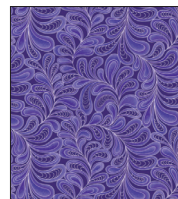
10265P-12 • SWIRLING HEARTS • BLACK/MULTI



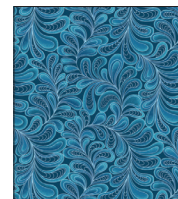
10266P-44 • FEATHER FROLIC • GREEN



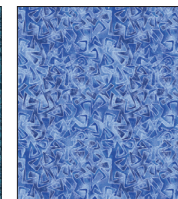
10266P-55 • FEATHER FROLIC • BLUE



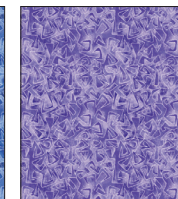
10266P-66 • FEATHER FROLIC • PURPLE



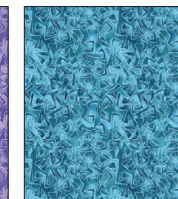
10266P-84 • FEATHER FROLIC • TEAL



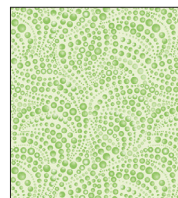
10267P-52 • TRIANGULAR MOTION • MED BLUE



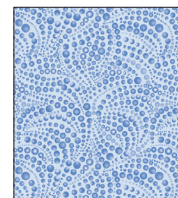
10267P-62 • TRIANGULAR MOTION • MED PURPLE



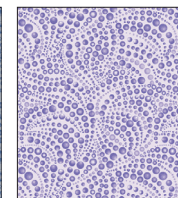
10267P-82 • TRIANGULAR MOTION • MED TEAL



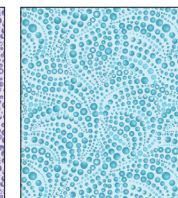
10268-40 • BEADED SWIRLS TONAL • LT GREEN



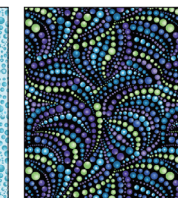
10268-50 • BEADED SWIRLS TONAL • LT BLUE



10268-60 • BEADED SWIRLS TONAL • LT PURPLE



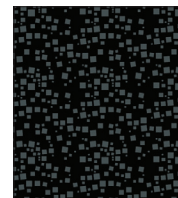
10268-80 • BEADED SWIRLS TONAL • LT TEAL



10270-99 • BEADED SWIRLS • MULTI



4208-09 • SMALL GEO SQUARES • WHITE



4208-12 • SMALL GEO SQUARES • BLACK



10261P-99  
PURRFECT STRIPE • MULTI